

Little Cotton Rabbits

small rabbit with clothes



*The grey Bunny is knitted from Malabrigo worsted yarn in 009 Polar morn
and the bunny with the patch is knitted from Cascade 220 Heathers
in 9600 antique heather (Yarn A) and 2440 vinci (Yarn B).
The dress and sweater are made from cotton 4ply yarn (see page 3 for yarn suggestions)
and the shorts are in BC Garn Allino yarn in deep brown.*

*More knitting patterns are available at
<https://littlecottonrabbits.typepad.co.uk>*

Materials:

- Worsted or light Aran yarn (approx 52m/56yds):
Yarn A (to make a bunny in a single colour)
- Worsted or light Aran yarn (approx 36m/39yds):
Yarn B (optional, for 2 coloured bunny)
- 4ply weight cotton yarn, in 2 colours for dress and underwear:
Yarn A (38m/40yds), Yarn B (16m/17yds)
and 2 colours for the sweater:
Yarn C (20m/21yds), Yarn D (13m/14yds)
- 4ply/5ply weight yarn in dark colour for shorts
(21m/22yds): Yarn E
- Scraps of black and grey yarn, DK or 4ply for the eyes and facial features
- Scraps of cream worsted or light Aran for the tail
- Toy stuffing

Notions:

- Knitting needles:
A pair each of 3mm (US 2.5), 2.75mm (US 2) and 2.5mm (US 1.5)
- Tapestry needle
- A tiny button

Finished size:

approx 18cm (7 inches) from the tip of the toes to the top of the head

Gauge:



Gauge for rabbit: 6 stitches x 9 rows to 1 inch

Gauge for clothes: 7 stitches x 10 rows to 1 inch

Thanks for buying a copy of this pattern. It is suitable for intermediate knitting skills and assumes an understanding of basic stitches and standard knitting terms. Apart from a couple of shaping rows the knitting part of the pattern is quite simple and straightforward. All of the pieces are knitted flat and seamed (though if you decide to convert it to knit it in the round please bear in mind that you will lose the ability to use the seams to add structure and shape to your finished bunny and it will not look the same).

It is mostly the finishing techniques (sewing up, seams etc.) that give any knitted project a polished look. I've described in detail how I try to get the neatest look to the animals that I make, how I sew up, tighten seams etc. to get a particular shape. You will need to use mattress stitch if you want to follow the instructions properly as it has the benefit of giving a flexible seam that can be gathered in and is virtually invisible when finished. There are a few fiddly finishing bits that are worth taking extra time over and it's also worth re-doing bits if you're not happy with the look (it sometimes takes me 2 or 3 tries to get a face exactly how I want it).

Anyway, I hope that you find the pattern enjoyable (if a bit fiddly in parts) and are pleased with the bunny that you make.

Abbreviations:

Increases:

M1L : MAKE 1 LEFT. A nice tight method of making an extra stitch. With the left hand needle pick up the connecting strand between the two needles and knit into the back of the loop to create an extra stitch. If you find this too tight for your liking you can substitute M1A (make one away) see below, which will give a looser increase.

KLL : KNIT LEFT LOOP. Increase 1 stitch by knitting into the stitch that is 2 below the one you have just knitted... insert tip of left needle into the stitch from behind and bring the loop onto the left needle. Insert the tip of the right needle into the back loop and knit, so making an extra stitch. This is the most invisible increasing method I've found so far but if you prefer you can substitute M1L above.

M1A: MAKE 1 AWAY: make a backwards loop to create an extra stitch on the current row, with the yarn facing away from the direction of knitting

M1T: MAKE 1 TOWARDS. Make a loop with the working yarn so the tail is pointing forwards/towards you

Decreases:

SSK (SLIP, SLIP, KNIT) : Slip a stitch (as if to knit it) to the right-hand needle, slip a second stitch in the same way, slip both stitches together back to the left-hand needle and knit together through the back loops.

K2TOG : Knit 2 stitches together

P2TOG : Purl 2 stitches together

P2TOG TBL: Purl 2 stitches together through back loops

And please note that when the pattern mentions cast on, I use a cable cast on.

Yarn suggestions:



Lana Grossa Canapa in
1 rohweiss and 6 hellgrau

Both of these bunnies combine 1 strand of Rowan kid classic
and 1 strand of Rowan kidsilk haze

Malabrigo Worsted in
630 comfy junkie and 63 natural

When knitting my animals I've always enjoyed experimenting and so I've used many different yarns over the years. Above are some of my current favourite yarns to make this pattern in. There is also a post over on the blog which details lots of alternative worsted yarn suggestions

https://littlecottonrabbits.typepad.co.uk/my_weblog/knitting-tips-and-tutorials.html

Yarn suggestions for clothes:

I prefer to knit the clothing in 4ply cotton/cotton mix yarns. Cotton yarns are crisp and show off colour-work patterns nicely, they also block well. I particularly like BCGarn Alba, MillaMia Naturally Soft Cotton, Phildar Phil Coton 3, Drops Safran and DMC Natura Just Cotton as all knit up nicely and have a good range of colours. Patons 4ply cotton and Sirdar 4ply cotton also come in a wide range of colours but are thinner, and Cascade Ultra Pima Fine has a wonderful range of colours but is a little thicker, so if using any of these you will need to check your gauge if the clothes are to fit. It also may be worth looking on Ravelry to see what yarns others are using and recommending.

Tip: Before you start get to know your yarn. Does it break easily? If so you will need to consider using a different yarn to sew up with as some seams need to be gathered in tightly and so need a strong yarn to cope.

Some notes on stuffing:

Stuffing soft toys and decorations can be tricky. Knitted fabric has a lot of stretch and unlike a firm woven fabric it will expand to the shape of the stuffing inside.

No matter how good your shaping is on a knitted piece, the way in which you stuff will be more crucial in determining the finished shape.

On limbs it is best not to over stuff and therefore avoid a fat sausage shape. On bodies it is fine to stuff firmly but be aware that over stuffing may mean that your bunny does not sit down well.

I find that putting in small amounts of stuffing and building up a shape works best for me rather than pushing in a large wad all at once.

Extra help:

I hope you enjoy using this pattern. There some extra tips about knitting and finishing on my blog, including seaming with mattress stitch, working in Fair Isle/stranded technique and Swiss darning/duplicate stitch, so please pop by for a visit and check out the tutorial section: https://littlecottonrabbits.typepad.co.uk/my_weblog

If you get stuck with any aspect of the pattern, please come and visit the Little cotton Rabbit group on Ravelry: <https://www.ravelry.com/groups/little-cotton-rabbits>

Or the Little Cotton Rabbits Facebook group: <https://www.facebook.com/groups/littlecottonrabbits>

Lots of knitters who've already used the patterns hang out there and one of us will do our best to help you. You'll also find lots of other projects made from these patterns, please come and share yours.

The pattern instructions:

Please note that this pattern comes with a few options for different head designs and that there are instructions on pages 18 & 19 for both a plain bunny head and a Dutch bunny head.

Head with eye patch:

Before starting, cut a 2.5m (2.7yds) length of Yarn A in order to work the intarsia section from row 16 onwards.

A note about intarsia technique: It is important that you intertwine the strands of contrasting colours as you switch between them, there are lots of good video tutorials on youtube if you are new to this technique.

Starting at the back of the head and finishing at the nose. Use Yarn A and 3mm needles to cable cast on 9 stitches, leaving a long tail for seaming with later. * the K1 stitches on row 7 mark the points to attach each ear

- | | |
|---|---|
| row 1: (wrong side) Purl | row 18: K8, K5 , K16 |
| row 2: K2, (KLL, K1) 6 times, K1 (15 stitches) | row 19: P16, P5 , P8 |
| row 3: Purl | row 20: K2, SSK, (K2tog) twice, (K2tog) twice, K1 , K4, (K2tog) 5 times, K2 (19 stitches) |
| row 4: (K2, KLL) 7 times, K1 (22 stitches) | row 21: P12, P2 , P5, cut Yarn B and the extra length of Yarn A from the work |
| row 5: Purl | row 22: K2, K2tog, K11, SSK, K2 (17 stitches) |
| row 6: K2, KLL, (K3, KLL) 6 times, K2 (29 stitches) | row 23: Purl |
| row 7: P12, K1, P3, K1, P12 | row 24: K2, (K2tog) twice, rejoin Yarn B and SSK , K1 , K2tog , rejoin the extra length of Yarn A and K2tog, SSK, K2 (11 stitches) |
| rows 8-15: Beginning with a Knit row and ending with a Purl, work 8 rows in stocking stitch (alternate Purl and Knit rows) | row 25: P4, P3 , P4 |
| row 16: K10, join in Yarn B and K2 , join in the extra length of Yarn A and K17 | |
| row 17: P16, P4 , P9 | |

Cut the work from the ball leaving a long tail and sew this through the remaining 11 stitches (*fig. 1*). Pull up tightly and over-sew/whip stitch once to keep the seam from opening out again. Continue using this thread to close around an inch of the front head seam using mattress stitch. Now thread the tapestry needle with your cast-on tail and use it to begin closing the seam at the back of the head using mattress stitch and leaving a gap through which to stuff the head (*fig. 2*).



fig. 1



fig. 2



fig. 3

Finally, with the right side of work facing you use an extra 8 inch length of Yarn A to pick up the loops from the cast on edge, (I've used blue thread here simply to illustrate, *fig. 3*). Pull this tightly to gather in the seam and tie the ends together tightly inside the head to prevent it loosening again. Turn the head inside-out and weave in all the ends from the coloured patches, then turn right side out again. Next it's time to stuff.



fig. 4

fig. 5

fig. 6

fig. 7

I start with a tight ball of stuffing which I poke into the back of the head, packing it in firmly (fig. 4) then stuff the nose end lightly, pinching and manipulating the stuffing until it takes on the shape that I want (fig. 5).

Then I stuff the cheeks quite firmly to make them bulge out at the bottom of the head (fig. 6 – here only the left side cheek is fully stuffed). I pack in a lot of stuffing but I tend to add little bits at a time moulding as I go to get the shape that I want and the finished head is quite firm and solid (fig. 7).

When you are happy with the head shape leave the seam at the bottom of the head open for now and set the head aside while you make the ears.

E a r s: (make two the same)

Starting at the bottom of the ear and finishing at the topmost point, use 3mm needles to cable cast on 11 stitches, leaving a long tail for seaming with later

row 1: (K1, P1) 5 times, K1

row 2: (K1, P1) 5 times, K1

rows 3-12: Repeat rows 1 & 2 five more times

row 13: (K1, P1) twice, Slip 1, K2tog pass slipped stitch over, (P1, K1) twice (9 stitches)

row 14: (K1, P1) 4 times, K1

row 15: K1, P1, K1, P3 tog, K1, P1, K1 (7 stitches)

row 16: (K1, P1) 3 times, K1

row 17: K1, P1, Slip 1, K2tog pass slipped stitch over, P1, K1 (5 stitches)

row 18: (K1, P1) twice, K1

row 19: K1, P3 tog, K1 (3 stitches)

row 20: K1, P1, K1

Cut the work from the ball leaving a long tail and sew this end through the last 3 stitches on the needle, pull up to tighten the stitches, leaving a slightly rounded end to the ear. Weave in this tail along the centre of the ear all the way to the cast-on edge (fig. 8). Fold the ear in half lengthways and join the cast-on edge by over-sewing using the cast-on tail. Tie the two ends together securely at the back edge of the finished ear (fig. 9).

Next thread the tapestry needle with the longest end from one ear and attach the ear by sewing through one of the two marker stitches on row 7 of the head (fig. 10)

Sew forward from the back of the ear to the front joining the ear to the head by the loops from the cast on edge of the ear and the bars between stitches on the head. Make sure you keep in the same channel between stitches (fig. 11).



fig. 8



fig. 9



fig. 10



fig. 11



fig. 12

fig. 13

fig. 14

fig. 15

When you reach the front edge of the ear (*fig. 12*) you can decide whether to also sew the other edge of the ear to the head by working back to the starting point. It is only worth doing this if the ear is particularly floppy, otherwise simply sew the yarn end back through the head to the point you started from at the back of the ear. Tie the two ends together securely once again and sew both ends through the head and out of the open seam on the underside.

Repeat with the second ear making sure they are in alignment (*fig. 13*). When you are happy with positioning (*figs. 14 & 15*) tie the 4 ends from the ears together securely, trim excess and poke inside the head cavity.

To embroider the face:

Thread a tapestry needle with a 10 inch length of black, brown or grey 4ply or DK Yarn and sew it up through the open bottom seam of the head and out on one side of the nose, down into the head on the other side of the nose and back out at the base of the nose (the centre of your gathered cast off) *fig. 16*.

Take the working yarn through the loop you've just made so that the nose is pulled down in a 'V' shape. Next take the yarn down the outside of the seam, sew it into the head at the base of the mouth and out at one mouth corner (*fig. 17*).

Take it across the front to the other mouth corner and back through the head, coming out again at the base of the mouth (*fig. 18*).

Take the working yarn through the loop you've just made so that the mouth is also pulled into a 'V' shape. Sew the end back through the head at the base of the mouth and out of the open seam at the bottom of the head (*fig. 19*). Adjust the tightness of the stitches forming the facial features and knot the 2 tail ends together securely before trimming and poke the excess inside the head.



fig. 16

fig. 17

fig. 18

fig. 19

I prefer to add the eyes after closing the seam on the underside of the head, so finish joining those seams together now. I aim to get the seams to meet just behind the chin shaping and gently tighten the seams to give the head extra shaping before tying both ends together. Don't trim the ends as you'll use them to attach the head to the body later.

To make the eyes cut an 8 inch length of black embroidery floss or 4ply yarn. Starting underneath the head sew this black yarn through the head to the position for the first eye leaving a tail of around 2 inches behind (I use the decreases either side of the K5 on row 20 as my markers for placement of eyes and I find it easier to see these clearly if I turn the head upside down). Create an anchored French Knot for each eye:

Anchored French Knot:

French Knots are a nice way of making a small decorative bobble and can be used as an eye or nose on a stuffed toy. The only problem can be that a knitted fabric tends to have large holes and so it is easy for the knot to slip to the wrong side of the work. To compensate I anchor my French Knots like this:



fig. 20

fig. 21

fig. 22

fig. 23

Thread a tapestry needle with 8 inches of yarn. Sew up through the work to the point that you want the knot. Then sew back through the same point and out again one stitch away from the original point, leaving a little loop (*fig. 20*). Slide the tip of the needle through this loop. Wrap the thread around the needle tip between three and five times depending on thickness of yarn – here I've wrapped 4 times with 4ply yarn (*fig. 21*). Hold the wrapped thread in place between your finger and thumb and pull the needle all the way through making a loose knot. Pull on the end under the head to tighten the anchor loop.

Sew back down through the work (*fig. 22*) and back to the start point underneath the head. Gently pull both ends to tighten the knot and create a little eye socket shaping to the head (*fig. 23*). Adjust the tightness until you are happy and then tie off both ends securely before sewing the ends through the head and trimming. Repeat for the second eye and set the finished head to one side while you make the body.

Body:

There are 2 options for the body. The first is plain and naked (*fig. 24*) and the second has knitted on underpants/knickers (*fig. 25*).

For the naked body (fig. 24):

Starting at the neck and finishing at the bottom, use Yarn A and 3mm needles to cable cast on 14 stitches, leaving a long tail for seaming with later

- row 1:** (wrong side) Purl
- row 2:** K3, (KLL, K2) 5 times, K1 (*19 stitches*)
- row 3:** Purl
- row 4:** K3, (KLL, K3) 5 times, K1 (*24 stitches*)
- row 5:** Purl
- row 6:** K3, (KLL, K4) 5 times, K1 (*29 stitches*)
- rows 7-22:** Beginning with a Purl row and ending with a Knit row, work 16 rows in stocking stitch
- row 23:** Cast off in Purl

To make the body with underpants (fig. 25):

Work the body exactly as for the naked version, up to and including row 6, then follow these instructions:

- rows 7-11:** Beginning and ending with a Purl row, work 5 rows in stocking stitch
- row 12:** Change to 2.5mm (US 1.5) needles
K3, (KLL, K5) 5 times, K1 (*34 stitches*)
- rows 13-15:** Cut Yarn A from the work and change to 4ply yarn for the underpants. Continue using the 2.5mm needles and work 3 rows in Purl
- rows 16-26:** Beginning and ending with Knit rows, work 11 rows in stocking stitch
- row 27:** Cast off in Purl

For both versions of the body:

Cut the work from the ball leaving a long tail and use this to close the seam up the back of the body using mattress stitch. Leave a gap at the top to make stuffing the body easier.



fig. 24



fig. 25

Legs: (make 2 the same)

Starting at the underside of the foot and finishing at the top of the leg, use **Yarn B** and 3mm needles to cable cast on 12 stitches, leaving a long tail for seaming with later

row 1: (wrong side) Purl

row 2: K2, (KLL, K1) 3 times, K3, (KLL, K1) 3 times, K1 (18 stitches)

row 3: Purl

row 4: K3, (KLL, K1) 4 times, K5, (KLL, K1) 4 times, K2 (26 stitches)

rows 5-9: Beginning and ending with a Purl row, work 5 rows in stocking stitch

row 10: K10, SSK, K2, K2tog, K10 (24 stitches)

row 11: Purl

row 12: *Tip: This row is a little complicated because it includes both decreasing and casting off in the centre of the row. It is easy to lose count and I find it helps if you count the stitches yet to be worked rather than those already knitted.*

K6, Knit the next 4 stitches casting them off as you go (14 stitches still to work), SSK and cast off, K2tog and cast off (10 stitches still to work), Knit the next 5 stitches casting them off as you go, K5 (you now have 6 stitches on either side of the cast off section, giving a total of 12 on needle)

row 13: Purl across all stitches being careful to keep your tension tight across the gap (12 stitches)

rows 14-22: Beginning and ending with a Knit row, work 9 rows of stocking stitch

row 23: Cast off in Purl

Cut the work from the ball leaving a long tail for seaming with. Join the top of the foot seam by tying a 6 inch length of **Yarn B** to the back of the stitch in the middle of the open seam - I've used blue thread here just to illustrate (*fig. 26*). Begin to close this seam by over-sewing (whip stitching) across the gap through the outer loops of the cast off edge (*fig. 27*).



fig. 26

fig. 27

fig. 28

fig. 29

When you reach the top of the seam secure it and close up any small gaps by taking the needle behind one stitch on the right (fig. 28), then behind the stitch directly at the top of the seam (fig. 29), then behind one stitch on the right (fig. 30) and finally through to the inside of the work (fig. 31) where you can weave it along the seam and trim the end.



fig. 30

fig. 31

fig. 32

fig. 33

Start to close the back seam of the foot by threading a tapestry needle with the cast on tail and using mattress stitch. Seam around 1 inch and leave the rest of the leg open for now to make stuffing the foot easier. Next close the seam at the underside of the foot by re-threading the tapestry needle with a length of the same coloured yarn and using it to gather up the loops in the bottom of the foot – I've used blue thread here to illustrate (fig. 32). Tie both ends tightly inside the foot to fully close the bottom seam.

Next stuff the foot firmly. Take your time to get the shape that you want, adding small amounts of stuffing at a time and don't be afraid to pull it out and start again if you're not happy with the shape. Once you're happy with the foot shape close the leg back seam but leave a small gap at the top to make stuffing the leg easier. Stuff the leg lightly. If you want your bunny to sit nicely then don't stuff the top 1cm of the leg. Finish closing the seam and tie the two ends together at the top, poking all other ends inside the leg. Repeat for the second leg. Now both legs are ready to attach to the body (fig. 33). Although they are both the same I often find that one looks like a right and one a left so take time to look at them and decide which one goes on which side.

If you have worked the body with the underpants:

In order to have the finished bottom half of the body looking like knickers/underpants it is important that you sew through the **purl loops** on the back of the body cast-off row rather than the cast off edge itself, as this leaves the cast off edge as a nice neat line around the top of the leg. Sew alternately through these purl loops and the cast off edge of the leg top (fig. 34).

If you have worked the naked body:

Thread the tapestry needle with the longer end from the top of the first finished leg and use this to sew it to the body. Position the leg by lining it up with the edge of the body and over-sew/whip stitch the leg in place through the loops on the cast off body edge and cast off leg edge (fig. 35).

For both options: Work all the way around the top of the leg back to the start then tie both ends together inside the body to secure. Attach the second leg in the same way leaving a gap between both legs (figs. 36 & 37).



fig. 34



fig. 35



fig. 36

Once both legs are attached and secure close the short seam between the legs. To do so, turn the body inside out and tie a 6 inch length of yarn to the inside of the body at the start of the gap between the legs. For the naked body option this will be a length of Yarn to match the body colour and for the body option with underpants use a length of Yarn to match the underpants colour.

Turn the work right side out and use this thread to tightly over-sew/ whip stitch the short seam between the legs (fig. 38) before sewing it back inside and tying off to secure. Now your body is finished and it's time to stuff. I like to put most of the stuffing at the bottom of the body to make a fat tummy (fig. 39), though be careful not to overstuff and strain the seams. Add less stuffing towards the neck end so that the body tapers. When you are happy with the body shape finish closing the seam at the back of the body but leave the neck edge open. Tie off the ends but don't trim as you'll use them to help attach the head. Next make the arms.



fig. 37



fig. 38



fig. 39

A r m s: (make 2 the same)

Starting at the shoulder and finishing at the paw, use **Yarn B** and 3mm needles to cable cast on 9 stitches, leaving a long tail for seaming with later.

row 1: (wrong side) Purl

row 2: (K2, KLL) 3 times, K3 (12 stitches)

rows 3-17: Beginning and ending with a Purl row, work 15 rows in stocking stitch

row 18: K1, SSK, K1, K2tog, SSK, K1, K2tog, K1 (8 stitches)

row 19: Purl

Cut the work from the ball leaving a long tail, sew this through the remaining 8 stitches and pull up tightly (*fig. 40*). Over-sew/whip stitch once to keep the seam from opening out. Continue using this thread to close the arm seam using mattress stitch.

Leave a gap of around an inch and stuff the arm lightly, I prefer not to stuff the very top of the arm so that it's bit floppy. Finish closing the arm side seam and tighten it by pulling the end to get a slight curve to the arm and pulling the gathered paw end under (*fig. 41*). When you're happy with the arm shape tie both ends together and make a second one the same.



fig. 40



fig. 41



fig. 42

Tail:

Use 3mm needles and a scrap of cream or white DK, worsted or light Aran weight yarn to cable cast on 3 stitches, leaving a long tail for seaming with later

row 1: (right side) Purl	row 6: Knit
row 2: K1, M1L, K1, M1L, K1 (<i>5 stitches</i>)	row 7: Purl
row 3: Purl	row 8: K2tog, K3, K2tog (<i>5 stitches</i>)
row 4: K2, M1L, K1, M1L, K2 (<i>7 stitches</i>)	row 9: Purl
row 5: Purl	row 10: K2tog, K1, K2tog (<i>3 stitches</i>)
	row 11: Purl

Cut the work from the ball leaving a long tail and sew this end through the last 3 stitches on the needle, pull up to tighten the stitches. Use the longer end to gather all the way around the edge of the circle using a running stitch (*fig. 42*). Making sure the purl side is outermost pop a small wad of stuffing in the middle and tie the two ends together securely, gathering up the edge to enclose the stuffing and make a ball. over-sew/whip stitch a few times to secure and then your tail is finished (*fig. 42*).

Finishing off:

Next join the head. Thread the tapestry needle with one of the two threads from underneath the head and use to sew the body and head together. I sew through the loops at the open neck edge of the body then through a whole stitch of the head (*fig. 43*), working around in a semi circle until I reach the ends from the top of the body seam running up the back. Then I tie the end I've been sewing with to the shortest body seam end and poke both inside the body. Continue sewing up with the longer end from the body seam, knotting it to the remaining end under the chin once the head is fully joined. Sew the ends through the body before trimming the excess.

Once the head is fully joined it is easier to gauge where to place the arms. I like to place them so that they are joined at the end of the increase section on the top of the body, which helps to give a neck and shoulders to your finished bunny. Thread the tapestry needle with the longer end from the top of an arm and use this to join the arm to the body by sewing alternately through a loop on the open top edge of the arm then through a whole stitch of the body, (*fig. 44*). Work around all of the top arm seam joining it to the body and when you reach the start point knot the ends together and sew through the body before trimming.



fig. 43



fig. 44



fig. 45

Finally attach the tail, using the cast on and cast off tails to sew the tail to the bunny bottom. Tie off the ends to secure and sew them through the body before trimming excess.

Now your bunny is ready for some clothes, patterns for a dress, sweater and shorts are on the next three pages.



© Copyright, All rights reserved. No part of these patterns may be reproduced in any form.
These patterns are supplied for your personal and non-commercial use only.

Sleeveless dotty dress:



You will need 4ply weight yarn in 2 contrasting colours: Yarn A (33m/36yds), **Yarn B** (16m/17yds)

Starting at the bottom of the skirt, use 2.75mm needles and Yarn A to cable cast on 58 stitches, leaving a long tail for seaming with later (*Note: Odd numbered rows are the front of the work, even numbered are the back*)

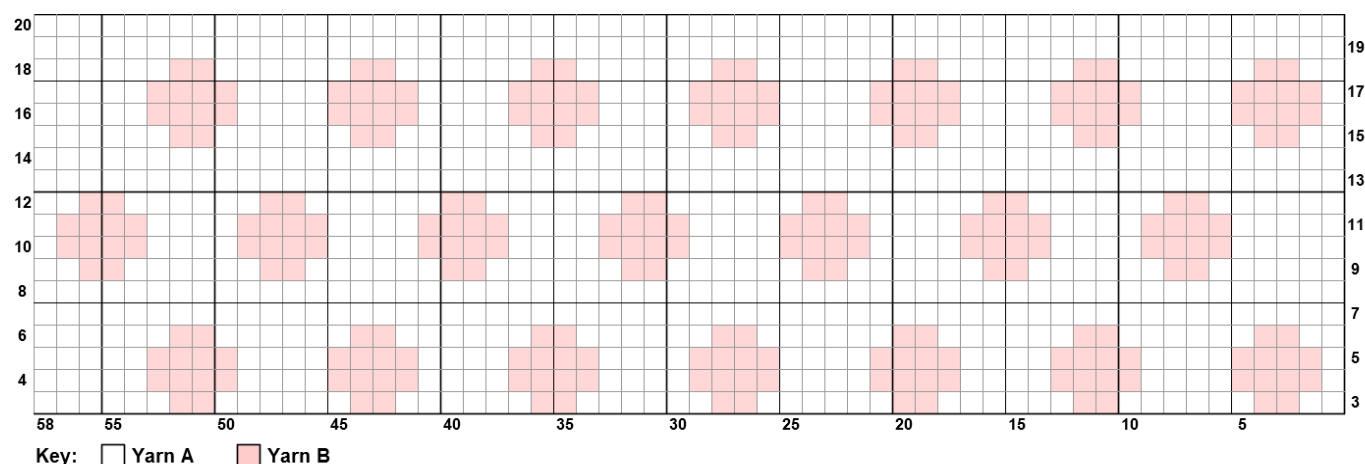
row 1: (right side) Knit

row 2: Knit

row 3: Begin working the first row from the pattern chart in Knit, reading from right to left **(If you prefer written instructions you will find them below)*

row 4: Purl the second row of pattern chart, reading from left to right

Continue working alternate Knit and Purl rows following the pattern chart below:



Written instructions for the dress pattern:

row 3: K2, (**K2**, K6) 7 times

row 4: P5, (**P4**, P4) 6 times, **P4**, P1

row 5: K1, (**K4**, K4) 7 times, K1

row 6: (P6, **P2**) 7 times, P2

row 7: Knit in Yarn A only

row 8: Purl in Yarn A only

row 9: (K6, **K2**) 7 times, K2

row 10: P1, (**P4**, P4) 7 times, P1

row 11: K5, (**K4**, K4) 6 times, **K4**, K1

row 12: P2, (**P2**, P6) 7 times

row 13: Knit in Yarn A only

row 14: Purl in Yarn A only

row 15: K2, (**K2**, K6) 7 times

row 16: P5, (**P4**, P4) 6 times, **P4**, P1

row 17: K1, (**K4**, K4) 7 times, K1

row 18: (P6, **P2**) 7 times, P2

row 19: Knit in Yarn A only

row 20: Purl in Yarn A only

row 21: Change to **Yarn B**, K1, (K2tog) 28 times, K1
(30 stitches)

row 22: Purl and at the end of the row cut **Yarn B** from the work, leaving a short tail for sewing in later, as you will not need this colour for the rest of the pattern.

In order to create the armholes, the next section is worked in three separate parts:

First side of the back:

row 23: Change back to Yarn A and K7. Slip the next stitch onto a cable needle and hold at the front of the work, Knit 1 stitch, slip the stitch from the cable needle back onto the left hand needle (it will be knitted later). Turn ready to work on these 8 stitches only for the next 6 rows.

row 24: P2tog, P6 (7 stitches)

rows 25-29: Beginning and ending with Knit rows, work 5 rows in stocking stitch. Cut work from the ball (leaving a short tail for weaving in later) and leave these 7 stitches on right hand needle.

Front:

row 23 (b): Rejoin Yarn A at the first stitch on the left-hand needle and Knit 13. Slip the next stitch onto a cable needle and hold at the back of the work, Knit 1 stitch, slip the stitch from the cable needle back onto the left hand needle (it will be knitted later). Turn ready to work on these 14 stitches only for the next 6 rows.

row 24 (b): P2tog, P10, P2togtbl (12 stitches)

rows 25-29 (b): Beginning and ending with Knit rows, work 5 rows in stocking stitch. Cut work from the ball (leaving a short tail for weaving in later) and leave these 12 stitches on right hand needle

Second side of the back:

row 23 (c): Rejoin Yarn A at the first stitch on the left-hand needle and Knit 8, turn ready to work on these 8 stitches only for the next 6 rows.

row 24 (c): P6, P2togtbl (7 stitches)

rows 25-29 (c): Beginning and ending with Knit rows, work 5 rows in stocking stitch.

Do NOT cut the yarn from the ball as you are now going to turn and work right across the three separate sections on the needle.

row 30: P6, P2tog, P10, P2tog, P6 (24 stitches)

row 31: Cast off in Knit.

Leaving a tail of around 8 inches cut the work from the ball and use a fine crochet hook (around 2mm) to make a chain of 6 stitches (or long enough to accommodate the size of button that you have). Join it back to the start point with a slip stitch to make a small loop and weave in the end, working downwards to the waist.

Sew a tiny button on the opposite side as a fastening for the dress. Before I sew up the back seam I like to block the dress to make it neat. I usually do this by carefully steam blocking but if you prefer wet blocking that is fine too. After blocking thread a tapestry needle with the cast-on tail and join the seam up the middle of the back using mattress stitch. Finish the seam at the waist (row 21) and tie the ends together before weaving them in along the inside seam and trimming excess.

Weave in the yarn ends from the tops of the armholes down along the armhole edges and tie to the ends at the bottoms of the armholes (don't pull too tightly or you'll make the armhole too small). Weave them in along the back of the waist shaping row and trim excess. Weave in any additional yarn ends from inside the dress along the inside seam and trim excess. Pop the dress on your bunny and you are done.

Please note that this dress pattern can also be used to make clothing for the naked animal from either of my '[mini bunny and bear patterns](#)'. If you make the mini version in worsted weight yarn with 3mm needles then the dress pattern as written here (with 2.75mm needles and 4ply yarn) will fit. If however you've made the mini bunny or bear with DK yarn then you'll need to use 2.5mm needles and 4ply yarn to knit this pattern, which will result in a smaller dress and a better fit for the mini sized animals.

.....

© Copyright, All rights reserved. No part of these patterns may be reproduced in any form.
These patterns are supplied for your personal and non-commercial use only.

Striped sweater:

Materials:

- 2.75mm (US 2) needles
- Yarn C: cream 4ply weight, (20m/21yds)
- **Yarn D**: blue 4ply weight (13m/14yds)
- a small button

Special abbreviations:

CDD: CENTRED DOUBLE DECREASE: Slip 2 stitches together as if to knit them, K1, pass the 2 slipped stitches over (*note*: it is important that they are slipped together and NOT one at a time)

PCDD: PURL CENTRED DOUBLE DECREASE: A method for decreasing 2 stitches at once on the wrong side of the work. Slip 2 stitches knitwise, **one at a time**. Then slip them back to the left needle together, with the left needle inserted through both from right to left (which turns and crosses the 2 stitches). Now purl the next three stitches together (the 2 twisted stitches plus the following stitch).

This sweater is worked in separate pieces up to the armhole but from the armhole upwards to the neck it is worked across all the pieces at once. Do not cut the threads for each colour change (unless indicated) but carry the un-worked colour up the side of each piece until it is next needed.

Please note: it is very important that you work all of the pieces in the following order:

sleeve 1, front, sleeve 2, back

This will ensure that they are all in the correct place when you get to row 11 and purl back across all of the stitches. When casting on the following pieces, keep the needle holding the piece/s already worked in your left hand and the empty needle in your right.

1. First sleeve:

Starting at the cuff and working up to the armhole, use Yarn C and 2.75mm needles to cable cast on 19 stitches, leaving a long tail for seaming with later

row 1: (wrong side) Knit

row 2: Change to **Yarn D** and **Knit**

row 3: Purl

row 4: Change to Yarn C and Knit

row 5: Purl

row 6: Change to **Yarn D** and **Knit**

row 7: Purl

row 8: Change to Yarn C and Knit

row 9: Purl

row 10: Change to **Yarn D** and **Knit**

Cut work from both colours, leaving a short tail for sewing in later and leave the work on the needle.

2. Front:

Starting at the bottom edge and working up to the armhole, use Yarn C and 2.75mm needles to cable cast on 21 stitches, leaving a long tail for seaming with later

row 1: (wrong side) Knit

row 2: Change to **Yarn D** and **Knit**

row 3: Purl

row 4: Change to Yarn C and Knit

row 5: Purl

row 6: Change to **Yarn D** and **Knit**

row 7: Purl

row 8: Change to Yarn C and Knit

row 9: Purl

row 10: Change to **Yarn D** and **Knit**

Cut work from both colours, leaving a short tail for sewing in later and leave the work on the needle.

3. Second sleeve: Repeat instructions as for first sleeve



4. Back:

Repeat the instructions for the front **BUT DO NOT** cut the work from **Yarn D**. Instead turn the work and follow the instructions below which are worked across all 80 stitches from the four separate sections now on the needle:

row 11: P20, P2tog, P17, P2tog, P19, P2tog, P18
(77 stitches)

row 12: Rejoin Yarn C, K1, SSK, K14, CDD, K17, CDD, K15, CDD, K16, K2tog, K1 (69 stitches)

row 13: Purl

row 14: Change to Yarn D, K1, SSK, K12, CDD, K15, CDD, K13, CDD, K14, K2tog, K1 (61 stitches)

row 15: P1, P2tog, P12, PCDD, P11, PCDD, P13, PCDD, P10, P2togtbl, P1 (53 stitches)

row 16: Change to Yarn C, K1, SSK, K8, CDD, K11, CDD, K9, CDD, K10, K2tog, K1 (45 stitches)

row 17: P1, P2tog, P8, PCDD, P7, PCDD, P9, PCDD, P6, P2togtbl, P1 (37 stitches)

row 18: Change to Yarn D, K1, SSK, K4, CDD, K7, CDD, K5, CDD, K6, K2tog, K1 (29 stitches)

row 19: Purl, then cut Yarn D from the work as it's no longer needed

row 20: Change to Yarn C, Knit

row 21: Purl

row 22: Knit

row 23: Purl

row 24: Knit

row 25: Cast off in Purl

Leaving a long tail cut the work from the ball and use a fine crochet hook (around 2mm) or the tip of a knitting needle to make a chain of 6 stitches (or long enough to accommodate the size of button that you have). Fasten off the chain by pulling the tail end through and join it back to the start point to make a small loop. Weave in the tail end before trimming excess.

Before sewing up the seams I like to block the sweater to make it neat. I usually do this by carefully steam blocking but if you prefer wet blocking that is fine too. After blocking thread the tapestry needle with the cast-on tail for one of the sleeves and join the seam up to the armpit using mattress stitch.

Repeat with the other sleeve and then use the cast on end from the front to join the side seam and repeat with the cast on end from the back. Close a 1cm section of the open armhole seam, leaving the top part of the seam open so that when the button is undone the sweater can be easily taken on and off. Weave in all the yarn ends along the inside seams and trim excess. Sew a tiny button on the opposite side to the loop and your sweater is done and ready to pop on your bunny.



Please note that this sweater pattern can also be used to make clothing for the naked animal from either of my 'mini bunny and bear patterns'. If you make the mini version in worsted weight yarn with 3mm needles then the sweater pattern as written here (with 2.75mm needles and 4ply yarn) will fit. If however you've made the mini bunny or bear with DK yarn then you'll need to use 2.5mm needles and 4ply yarn to knit this, which will result in a smaller sweater and a better fit for the mini sized animals.

© Copyright, All rights reserved. No part of these patterns may be reproduced in any form.
These patterns are supplied for your personal and non-commercial use only.

Short Trousers:

These shorts are knitted in one piece and seamed afterwards. You cast on at the waist and cast off at the bottom edge of each leg.

Use a 4ply or 5ply weight cotton or linen yarn, here I've used approx. 21m/22yds of BC Garn Allino, and 2.75mm needles to cable cast on 30 stitches, leaving a long tail for seaming with later.

row 1: (right side) K2, (P1, K1) 14 times
row 2: (P1, K1) 14 times, P2
row 3: K2, (P1, K1) 14 times
rows 4-5: repeat rows 2 & 3
row 6: Purl
row 7: K7, M1L, K16, M1R, K7 (32 stitches)
row 8: Purl
row 9: K7, M1L, K18, M1R, K7 (34 stitches)
row 10: Purl
row 11: K7, M1L, K20, M1R, K7 (36 stitches)
row 12: Purl
row 13: K7, M1L, K22, M1R, K7 (38 stitches)
row 14: Purl
row 15: K7, M1L, K24, M1R, K7 (40 stitches)
row 16: Purl
row 17: K7, M1L, K26, M1R, K7 (42 stitches)
row 18: Purl
row 19: K7, M1L, K14, turn and work only on these stitches to form one leg of the shorts. (22 stitches)

Special abbreviations:

M1R : MAKE 1 RIGHT. A nice tight method of making an extra stitch. With the left hand needle pick up the connecting strand between the two needles from behind and knit into the front loop to create an extra stitch. If you find this too tight for your liking you can substitute M1T (make one towards) which will give a looser increase.

row 20: Purl
row 21: K7, M1L, K15, turn (23 stitches)
row 22: Purl
row 23: K7, M1L, K16, turn (24 stitches)
row 24: Purl
row 25: Cast off loosely in Knit. Cut the work from the ball, leaving a long tail for seaming later

That's one trouser leg, next rejoin the yarn at the stitches still waiting to be worked and begin on the other leg:

row 19 b: K14, M1R, K7 (22 stitches)
row 20 b: Purl
row 21 b: K15, M1R, K7 (23 stitches)
row 22 b: Purl
row 23 b: K16, M1R, K7 (24 stitches)
row 24 b: Purl
row 25 b: Cast off loosely in Knit. Cut the work from the ball, leaving a long tail for seaming later

Before I sew up the seams I like to block the shorts to make them neat. I usually do this by carefully steam blocking but if you prefer wet blocking that is fine too. After blocking thread the tapestry needle with the cast on tail at the top and use mattress stitch to close the first 1cm of the seam. Re-thread the tapestry needle with the cast off end of one leg and use it to join the inside leg seam up to the crotch of the shorts. Do the same for the second leg. Tie both ends together inside the shorts and use the longer end to continue seaming up the back of the shorts, leaving a gap for the tail to stick through. Weave in all the ends inside the shorts before trimming excess and your shorts are ready to pop on your bunny.



Please note that these shorts can also be used to make clothing for the naked animal from either of my 'mini bunny and bear patterns'. If you make the mini version in worsted weight yarn with 3mm needles then the shorts pattern as written here will fit. If however you've made the mini bunny or bear with DK yarn then you'll need to use 2.5mm needles and 4ply yarn to knit this, which will result in smaller shorts and a better fit for the mini sized animals.

Dutch bunny head:



A

B

C

D

- A) Knitted from Quince and Co Owl yarn in 'tawny' with the patch in 'snowy'
- B) Knitted from Malabrigo Worsted in 622 'SFO Sky' with patch in 63 'Natural'
- C) Knitted from Malabrigo Worsted in 'Polar morn' with patch in 63 'Natural'
- D) Knitted from De Rerum Natura Gilliat in 'Goeland' with patch in 'sel'

Materials needed:

Yarn A: a darker coloured worsted weight yarn; **Yarn B:** a lighter coloured worsted weight yarn.

A note about intarsia technique: It is important that you intertwine the strands of contrasting colours as you switch between them on rows 18-21.

Head instructions:

Before you start cut a 2m (2.2yds) length of **Yarn A** in order to work the intarsia section from row 18 onwards.
Note, from row 22 onwards work in Yarn B only.

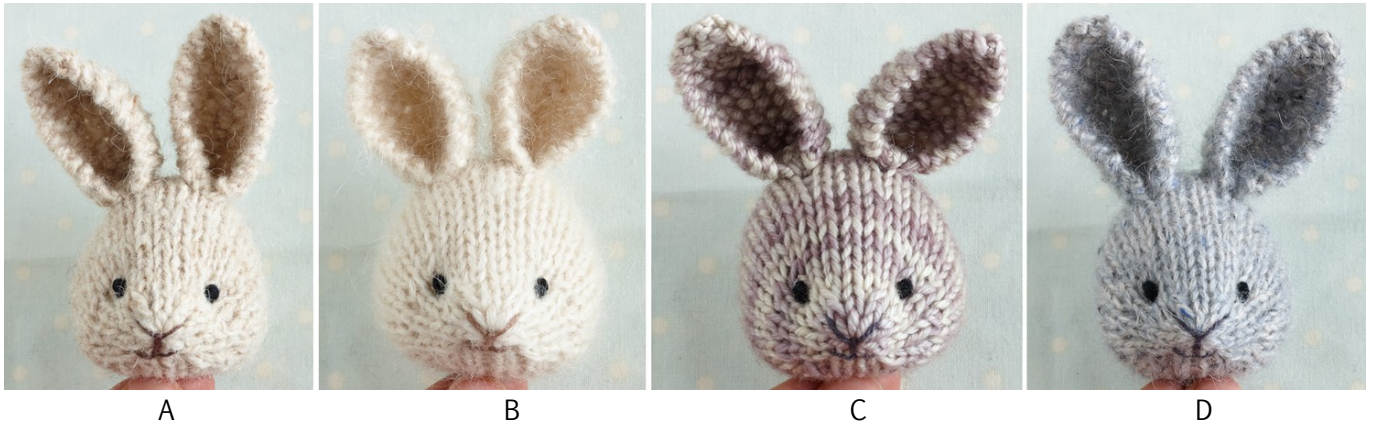
Starting at the back of the head and finishing at the nose. Use **Yarn A** and 3mm needles to cable cast on 9 stitches, leaving a long tail for seaming with later.

* the K1 stitches on row 7 mark the points to attach each ear.

- | | |
|--|--|
| row 1: (wrong side) Purl | row 20: K2, SSK, (K2tog) 4 times, K1, K3, K1,
(K2tog) 5 times, K2 (19 stitches) |
| row 2: K2, (KLL, K1) 6 times, K1 (15 stitches) | row 21: P7, P5, P7, cut both Yarn A and Yarn B from
the work, leaving tails for weaving in later |
| row 3: Purl | row 22: Rejoin Yarn B, K2, K2tog, K11, SSK, K2
(17 stitches) |
| row 4: (K2, KLL) 7 times, K1 (22 stitches) | row 23: Purl |
| row 5: Purl | row 24: K2, (K2tog) twice, SSK, K1, (K2tog) twice, SSK,
K2 (11 stitches) |
| row 6: K2, KLL, (K3, KLL) 6 times, K2 (29 stitches) | row 25: Purl |
| row 7: P12, K1, P3, K1, P12 | |
| rows 8-17: Beginning with a Knit row and ending with a
Purl, work 10 rows in stocking stitch | |
| row 18: K14, join in Yarn B and K1, join in the extra
length of Yarn A and K14 | |
| row 19: P14, P1, P14 | |

Continue by following the instructions from page 4 onwards. The ears, arms, body and legs look good in **Yarn A** though you can knit the last 4 rows of the arms in Yarn B to give lighter paws, if you prefer.

Plain bunny head:



- A) Knitted from Quince and Co Owl in 'Buru'
B) Knitted from 1 strand of Rowan kid classic in 828 'feather' and 1 strand of Rowan Kidsilk haze in 634 'cream'
C) Knitted from Malabrigo Rios in 'pearl'
D) Knitted from 1 strand of Rowan Felted Tweed DK 197 alabaster and 1 strand of Rowan Kidsilk Haze in 642 ghost

Materials needed:

Yarn A: a worsted weight yarn

Head instructions:

Starting at the back of the head and finishing at the nose. Use Yarn A and 3mm needles to cable cast on 9 stitches, leaving a long tail for seaming with later.

* the Knit stitches on row 7 mark the points to attach the ears.

- | | |
|--|---|
| row 1: (wrong side) Purl | row 20: K2, SSK, (K2tog) 4 times, K5, (K2tog) 5 times, K2 (19 stitches) |
| row 2: K2, (KLL, K1) 6 times, K1 (15 stitches) | row 21: Purl |
| row 3: Purl | row 22: K2, K2tog, K11, SSK, K2 (17 stitches) |
| row 4: (K2, KLL) 7 times, K1 (22 stitches) | row 23: Purl |
| row 5: Purl | row 24: K2, (K2tog) twice, SSK, K1, (K2tog) twice, SSK, K2 (11 stitches) |
| row 6: K2, KLL, (K3, KLL) 6 times, K2 (29 stitches) | row 25: Purl |
| row 7: P12, K1, P3, K1, P12 | |
| rows 8-19: Beginning with a Knit row and ending with a Purl, work 12 rows in stocking stitch (alternate Purl and Knit rows) | |

Continue by following the instructions from page 4 onwards.

© Copyright, All rights reserved. No part of these patterns may be reproduced in any form.
These patterns are supplied for your personal and non-commercial use only.